



7.0 Environment and climate change

7.1 Prevention of water pollution

7.2 Waste management

7.3 Avoid the use of banned agro-chemicals

7.4 Energy conservation and water harvesting

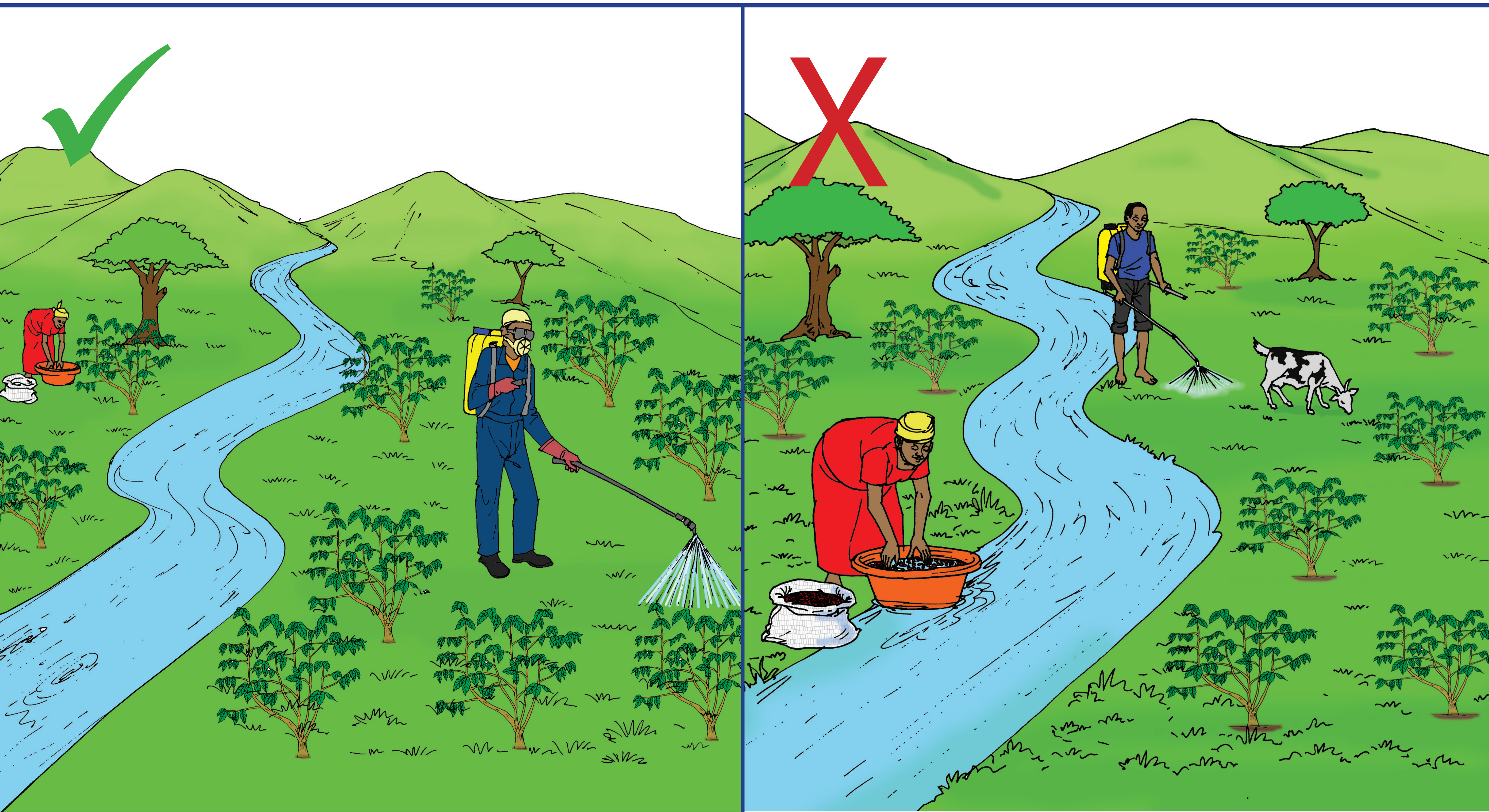
7.5 Disposal of annual crop residues

7.6 What is climate change?

7.7 Adaptation to climate change



7.1 Prevention of water pollution



1. Wash your coffee in a container away from a water source. Only spray away from a water source. This prevents water pollution.
2. Do not wash your coffee in the river. Do not spray close to a water source.

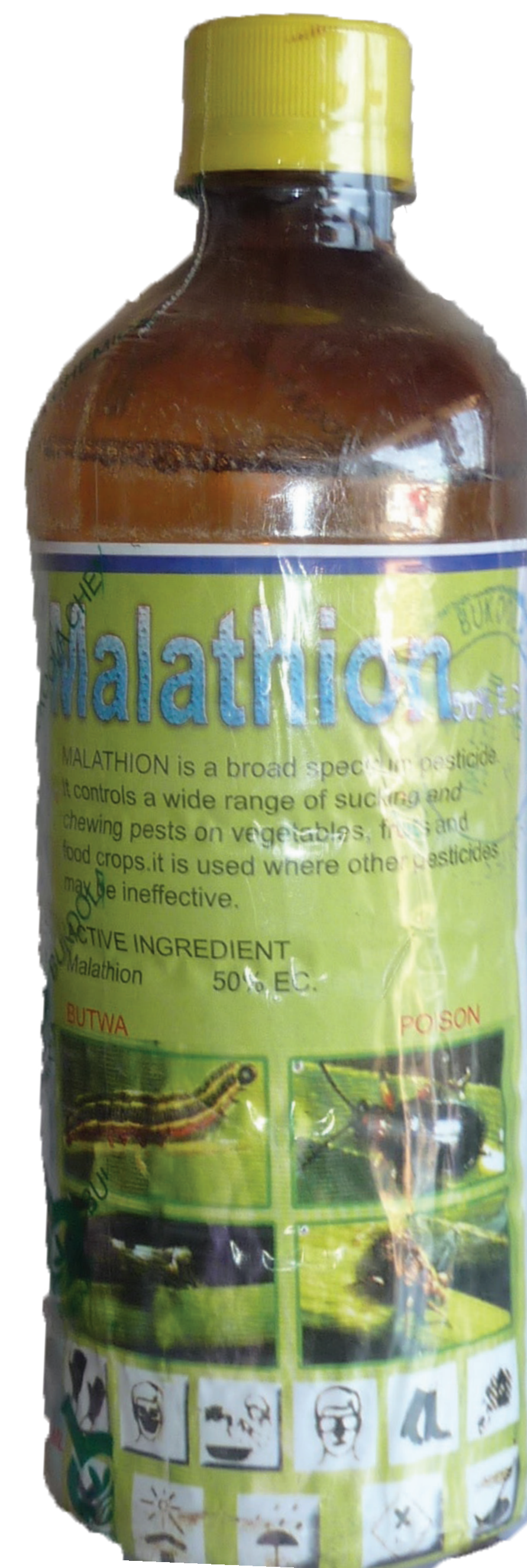
7.2 Waste management



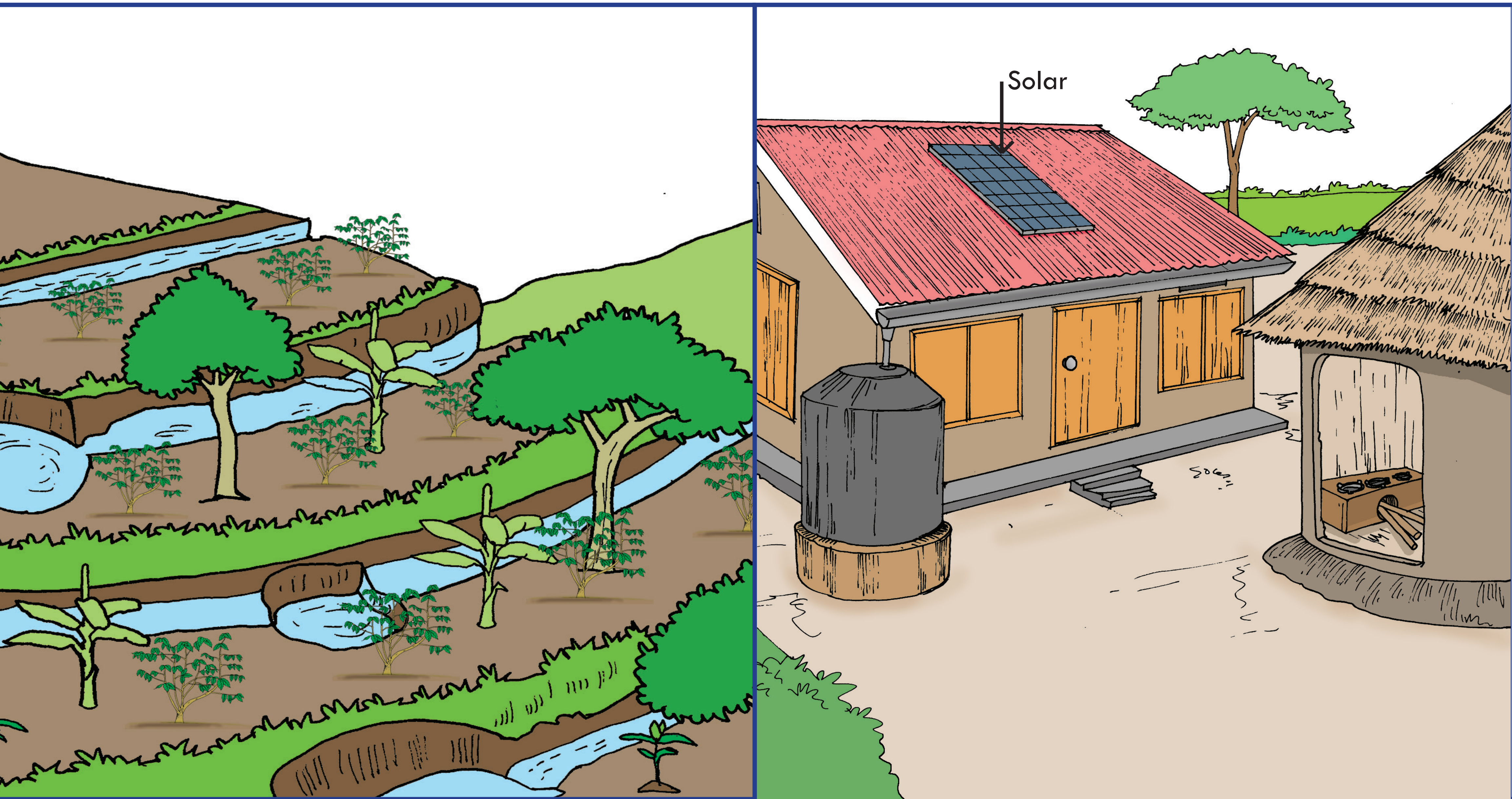
1. Separate organic waste to make compost.
2. Separate plastic and metal waste in a pit and sell if possible. Puncture all chemical containers to prevent reuse.

7.3 Avoid the use of banned agro-chemicals

Example

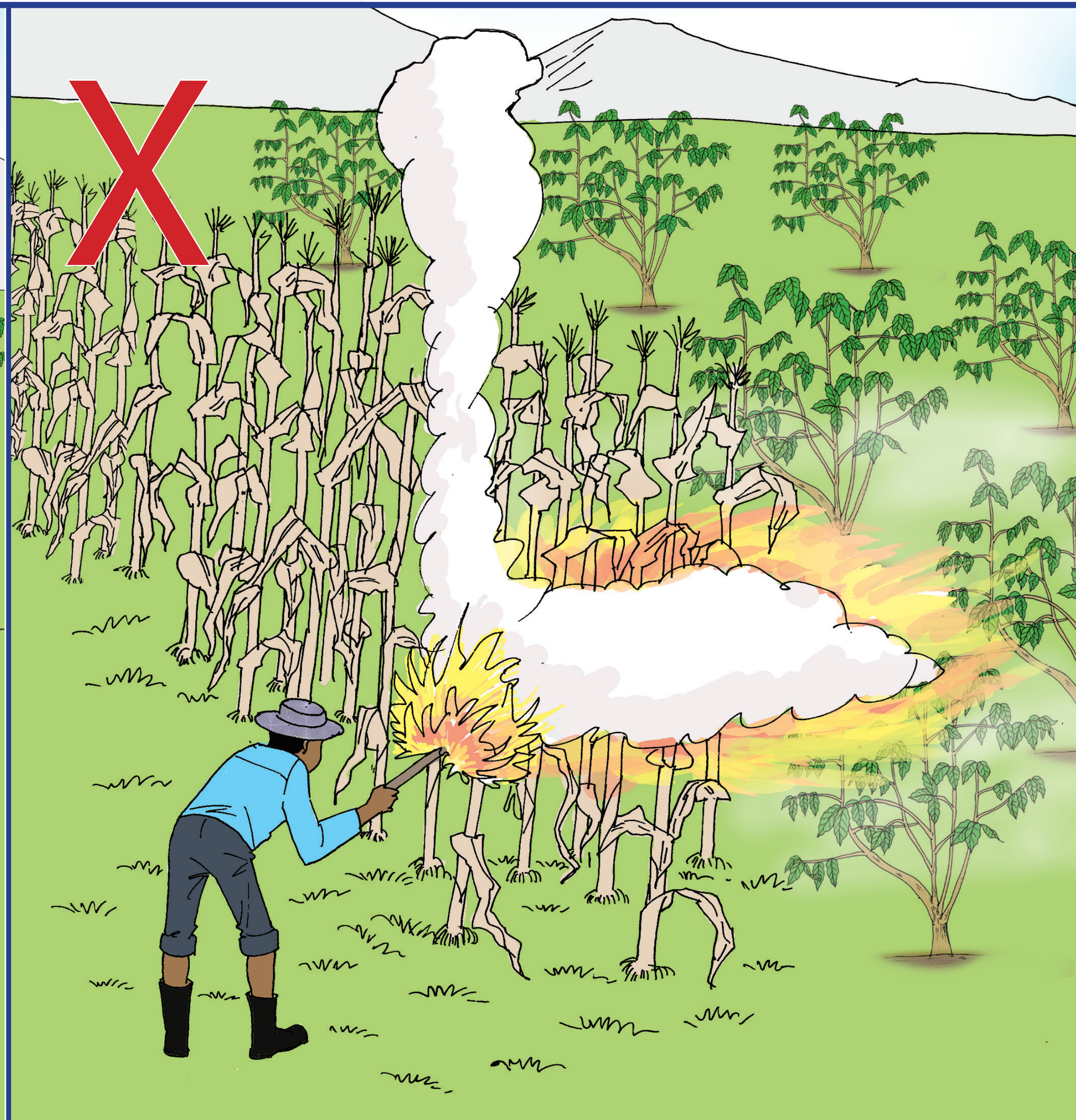
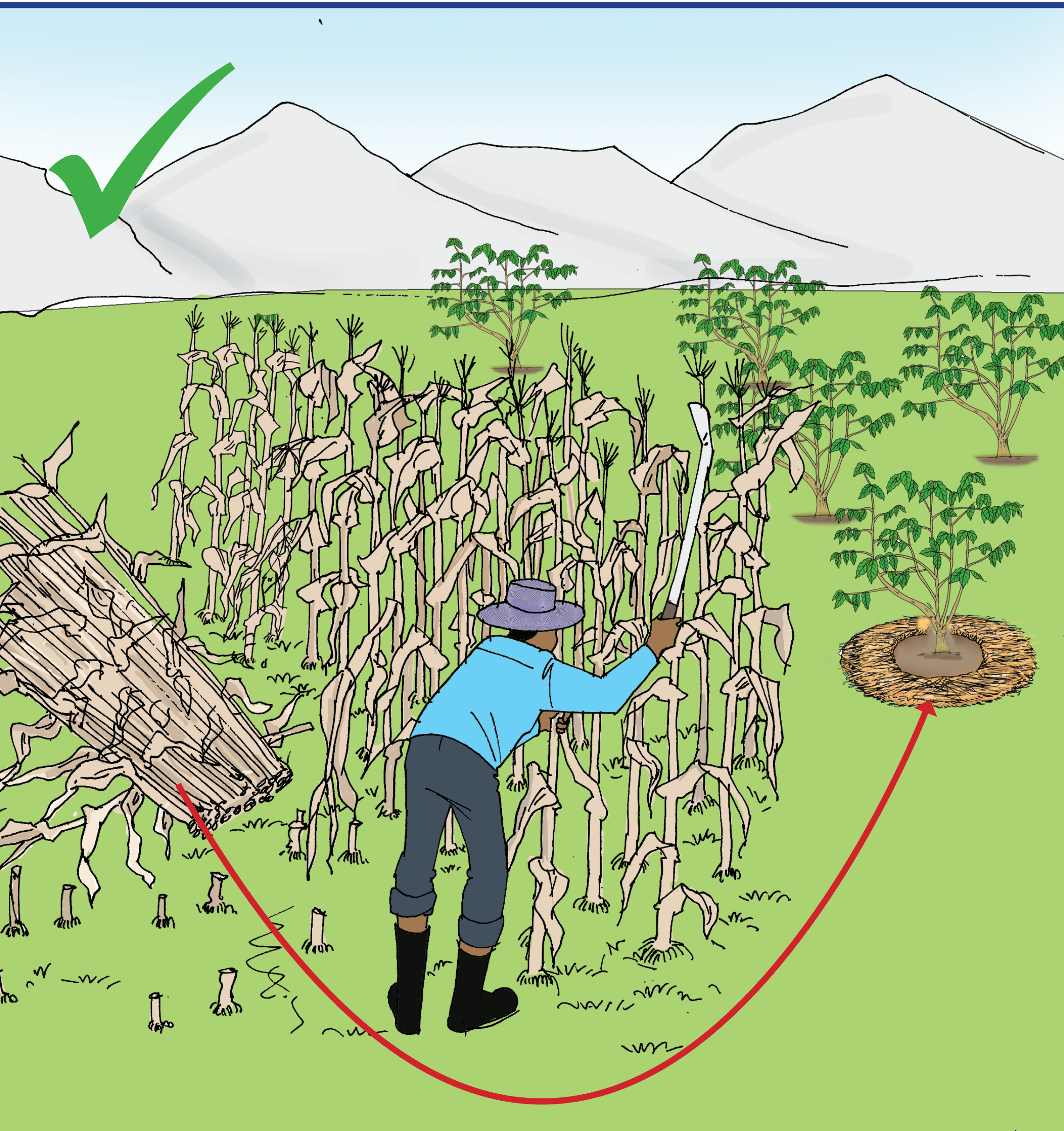


7.4 Energy conservation and water harvesting



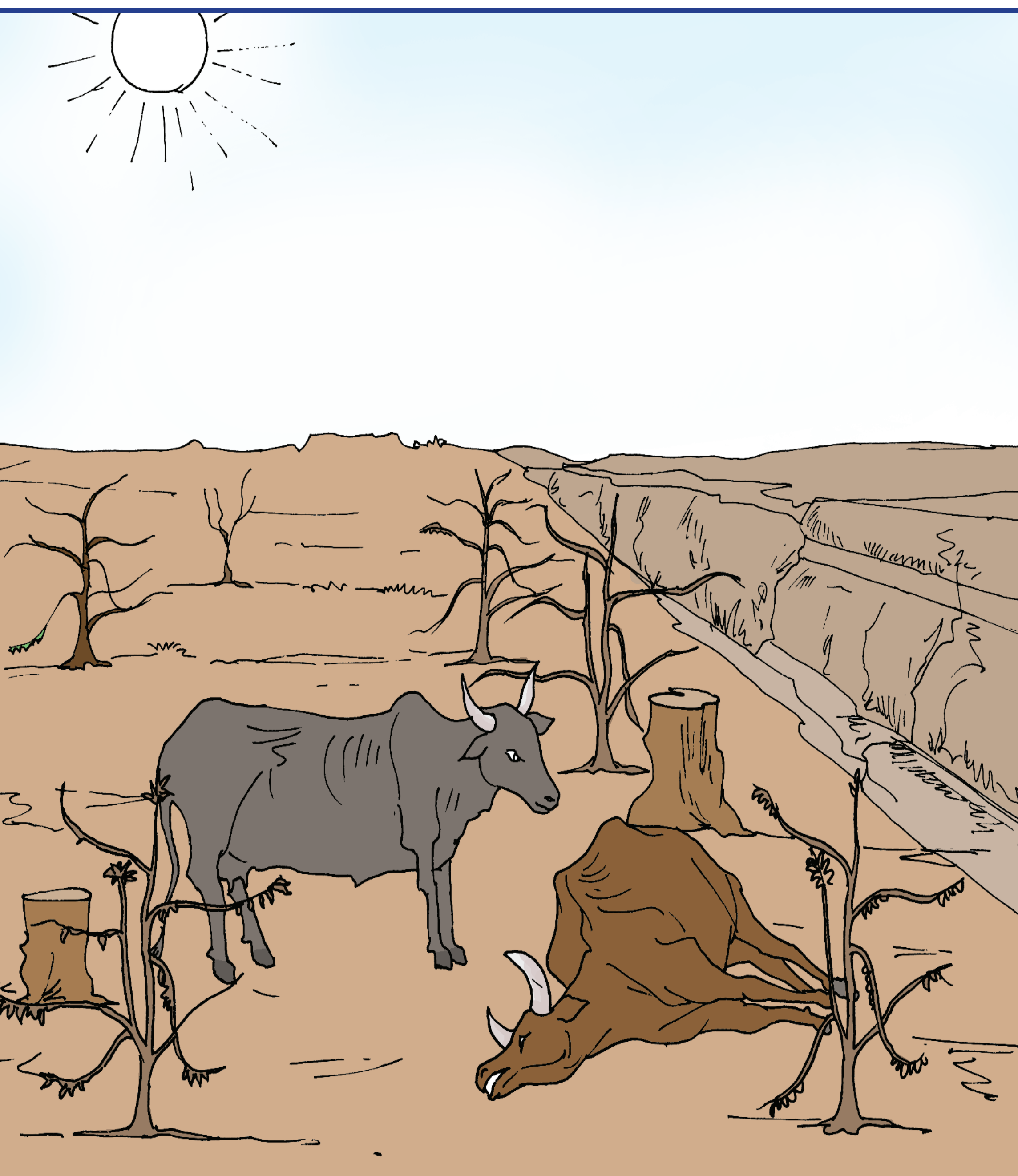
1. Plant multipurpose trees for shade and fuel use. Harvest water to retain moisture in the soil.
2. Harvest water for home use. Use solar energy and fuel saving stoves.

7.5 Disposal of annual crop residues



1. Use the crop residue to mulch your coffee or other crops.
2. Avoid burning annual crop fields as this could cause damage.

7.6 What is climate change?



Climate change is frequent and prolonged droughts; frequent floods, hailstorms, landslides and thunder storms; and erratic and unreliable rainfall affecting all farmers.

7.7 Adaptation to climate change

Irrigation



Soil and water conservation
and shade trees

Add mulch

1. Use good practices such as planting shade trees and cover crops in coffee, mulching, applying organic manure and inorganic fertilizer, digging trenches, gully traps and constructing terraces to minimise the effects of erosion.
2. Use integrated pests and diseases management practices (biological, chemical, cultural) to control pests and diseases.
3. Where possible, irrigate coffee gardens because of erratic rainfall and drought to mitigate effects of climate change on coffee production.
4. Get help from extension staff on how to get the appropriate and cost effective adaptation practices.